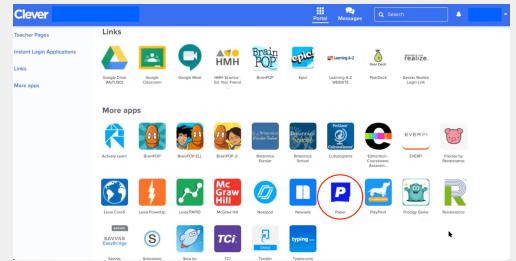


# How to navigate the Paper platform

1

You can access Paper with your single sign-on via Schoology or Clever - just click on the Paper logo



2

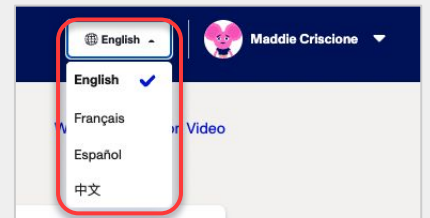
The first time you login, you will have to:

- ★ Sign the student code of conduct
- ★ Setup your learner profile by answering a few questions



3

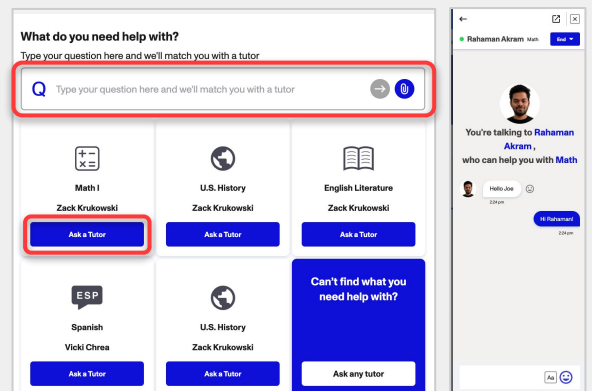
You can set your **language preference** in the top right of your screen



4

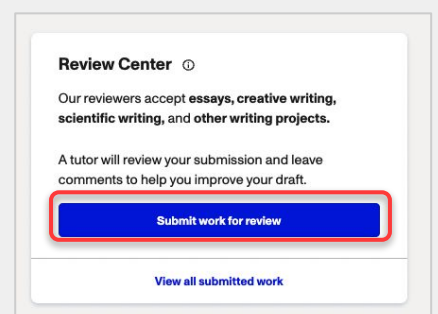
Start a Live Chat session with a tutor by selecting a **subject tile** or by entering their question in the **question matcher** at the top

TIP: You can also start a chat by clicking the “P” Chrome extension button



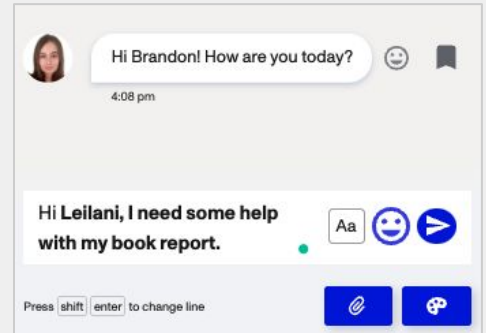
5

You can submit written work for feedback by clicking “**Submit Work for Review**” on the right-hand side of your screen

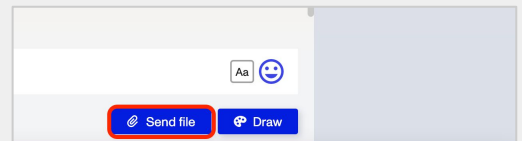


Once you open a live-chat session, you can:

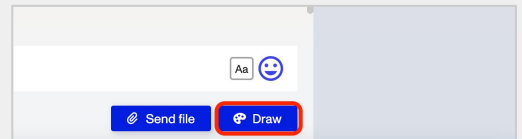
- 1 Ask your tutor a question about your work



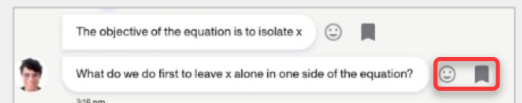
- 2 Share files and images by clicking Send File



- 3 Work with a tutor on a whiteboard by clicking Draw in the lower right corner of the chat session



- 4 Bookmark moments to review later by clicking the bookmark icon next to each chat bubble



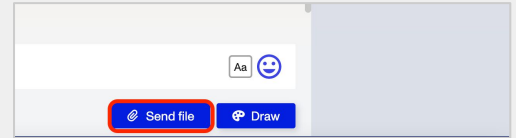
You can end the session at any time by clicking **End Session** in the top right.

A full screenshot of the Paper live-chat interface. The top navigation bar includes "PAPER", "Dashboard", "Chat", "Review Center", and user information "English" and "Maddie Criscione". The chat area shows a conversation with a tutor named Juan Sebastian. The chat bubbles include: "3x - 20 = 60", "Hi Maddie! How are you doing?", "Hi Great, thank you. Could you please help me with 3x - 20 = 60", "Sure!", "The objective of the equation is to isolate x", "What do we do first to leave x alone in one side of the equation?", and "That makes sense! Let me see". A red box highlights the "End Session" button in the top right. On the right side, there is a whiteboard with the handwritten equation  $3x - 20 + 20$ . The bottom toolbar includes "Send file", "Draw", and "Send" buttons.

In a live session, you'll be able to send files to your tutor for help:

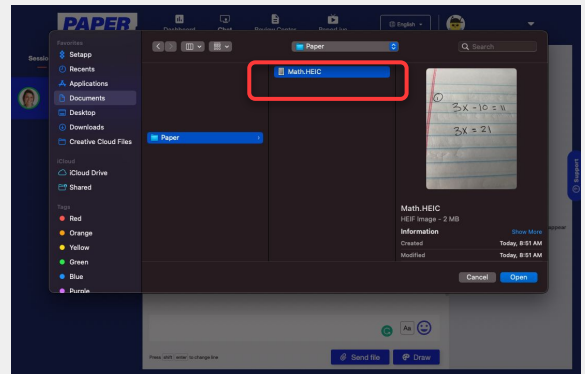
**1**

Share files and images by clicking **Send File**

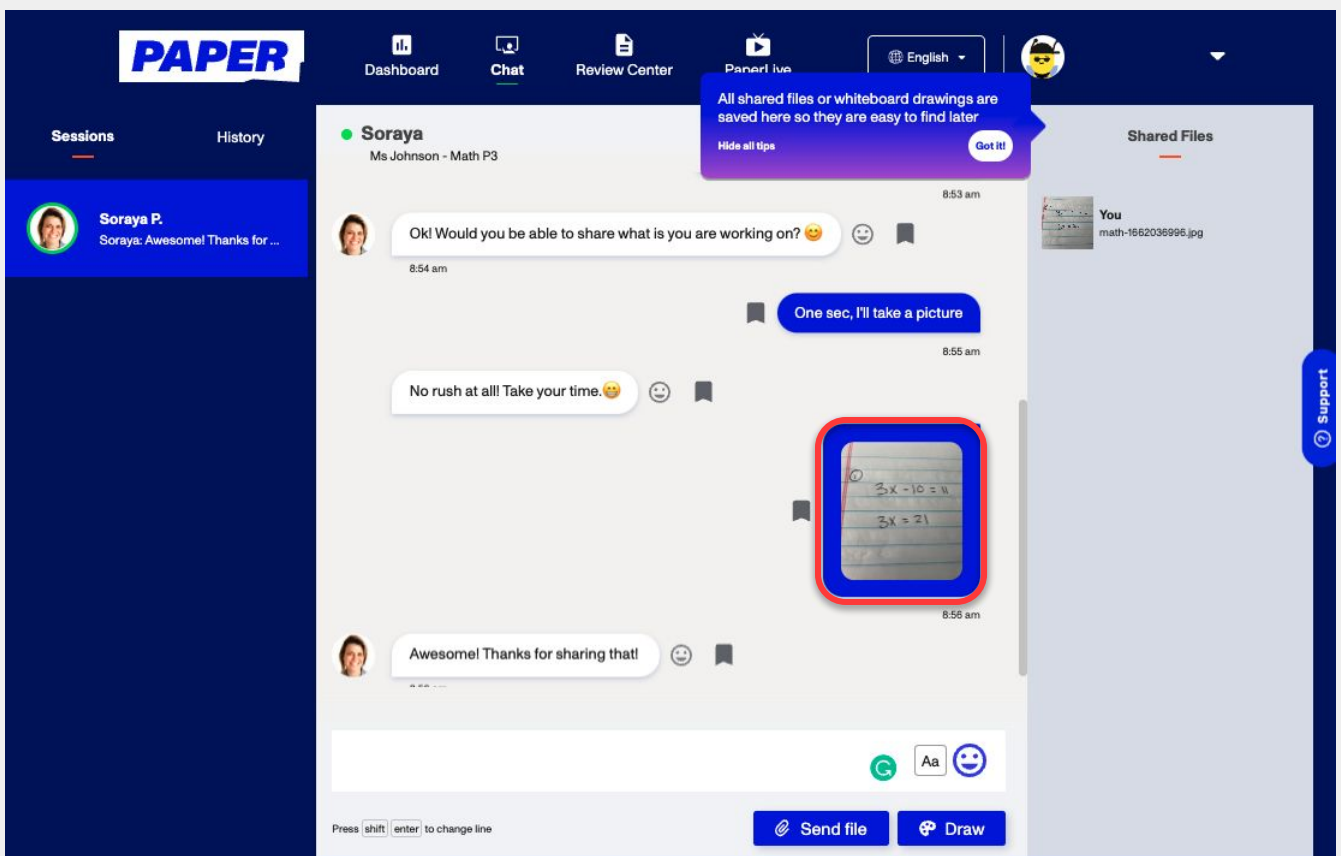
**2**

Search for and select the file you want to send to your tutor on your computer

*\*This screen might look different on your computer.*

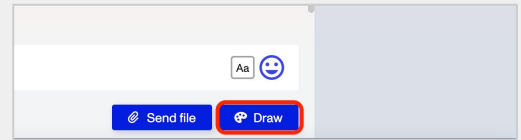
**3**

Share the file with your tutor to show them what you're working on

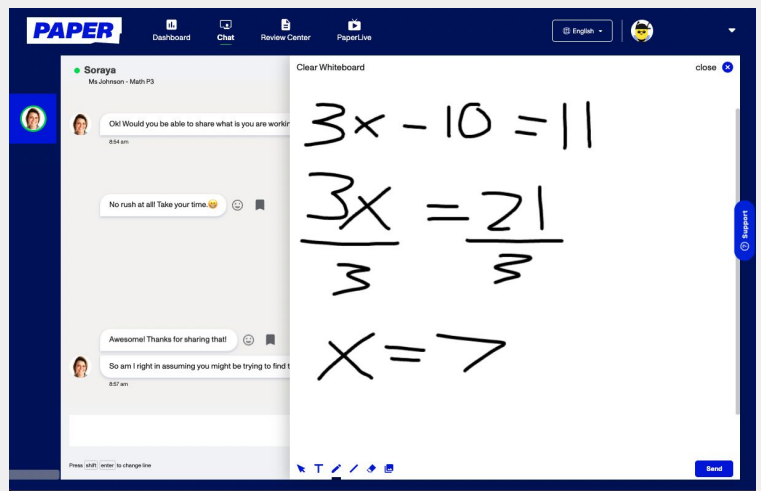
A screenshot of the Paper Live chat interface. The chat window shows a conversation with a tutor named Soraya. The messages are: Soraya: "Ok! Would you be able to share what is you are working on?" (8:54 am); User: "One sec, I'll take a picture" (8:55 am); Soraya: "No rush at all! Take your time." (8:55 am); User: "Awesome! Thanks for sharing that!" (8:56 am). A file named 'math-1652036996.jpg' is shown as being shared. A blue callout box says "All shared files or whiteboard drawings are saved here so they are easy to find later". The interface includes a top navigation bar with 'Dashboard', 'Chat', 'Review Center', and 'Paper! live'. A 'Support' button is visible on the right side.

Once you open a live-chat session, you can:

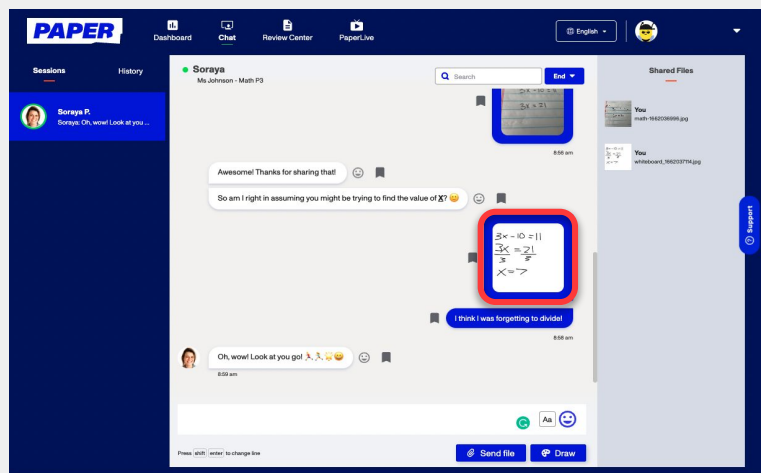
- 1 Work with a tutor on a whiteboard by clicking **Draw** in the lower right corner of the chat session



- 2 That opens the whiteboard where you can use your mouse to draw out your work



- 3 After seeing your work, your tutor can give feedback or suggestions as you work towards the answer



# Submit written work to a Paper tutor

**1**

You can upload work as a **Google Drive file** or a **file from your computer**

**Submission details**

Our reviewers accept essays, creative writing, scientific writing, and other writing projects.

Drag & drop file here  
or choose a file to upload

All Google Docs, Google Spreadsheets, .pdf, .doc, .docx, .rtf, and .txt file types are supported.

**2**

Once you click “Browse Files” or “Google Drive” you’ll be able to select your work

Select a file

Files

**3**

After that tutors will need you to give them this info:

- ★ **Teacher’s instructions**
- ★ **Any questions or specifics** you need help with

What is the title of your uploaded work? \*

What language is your writing in? \*

English

What are your teacher’s instructions for this assignment? Help your tutor understand what your teacher expects from your work.

Add written instructions, and/or upload an instruction file.

Let your tutor know what you need help with. What question(s) do you have? What have you tried so far? \*

The more you tell your tutor, the better they’ll be able to help you.

**4**

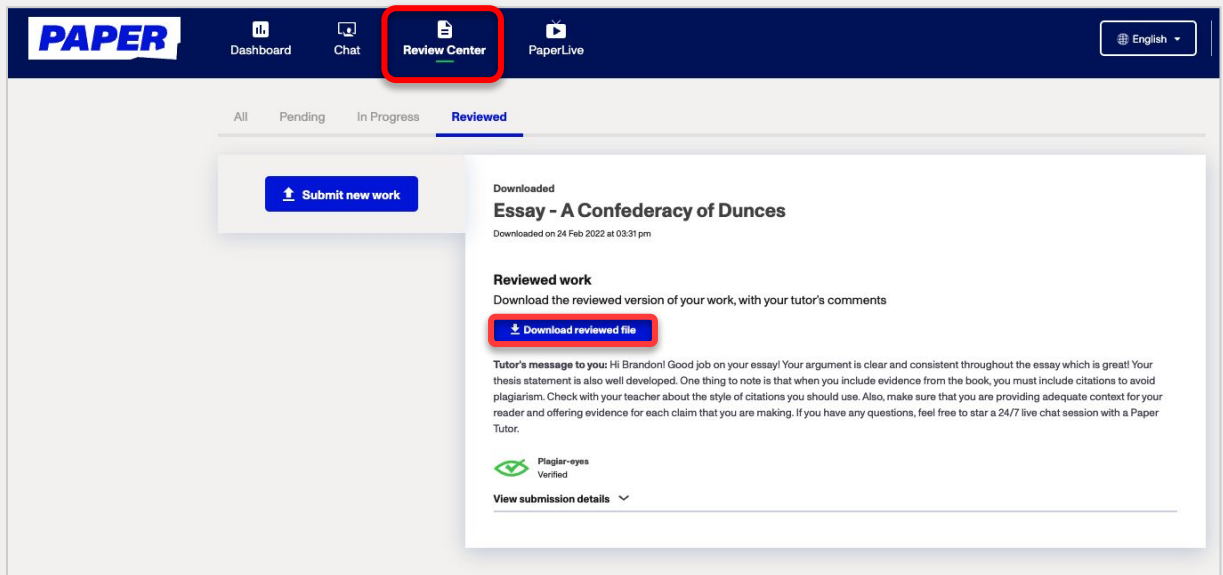
Once that info is filled out, click “Submit for review” and your work will be sent to a tutor for review.

# Submit written work to a Paper tutor (continued)

**5**

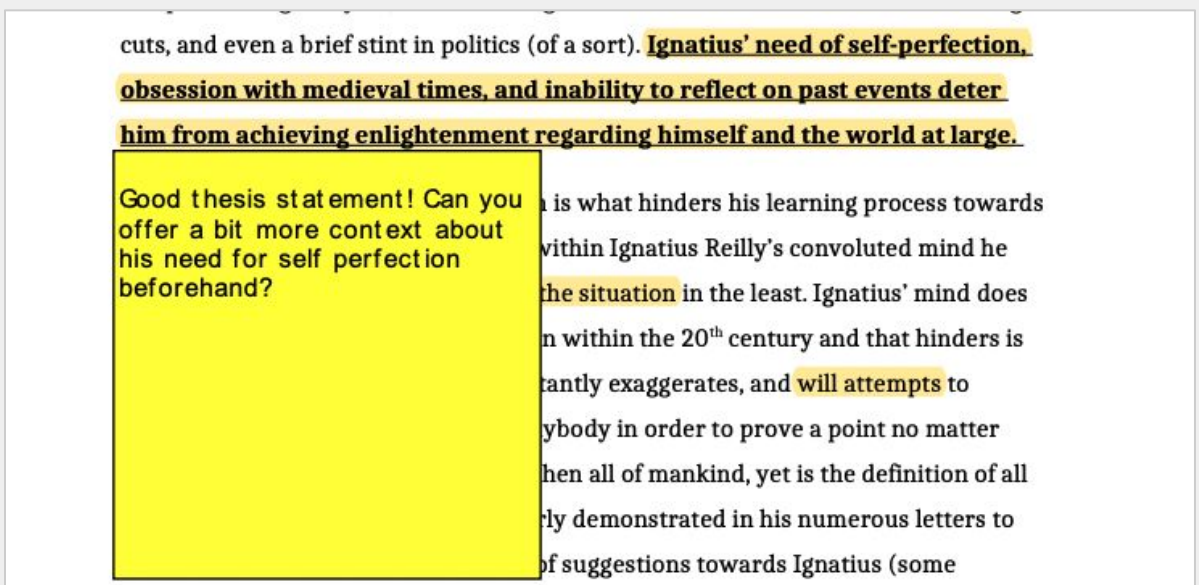
Once the work is reviewed, you'll get a notification that your written work has been reviewed by a tutor

- ★ You can access feedback by clicking the [Review Center](#) tab and selecting [Download Reviewed File](#)



**6**

Feedback from your tutor will appear as annotated notes.

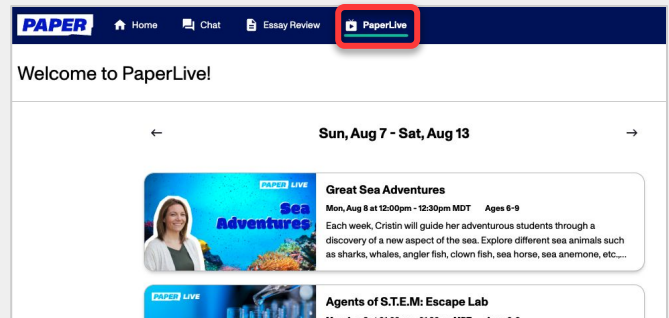




# Sign up for live, interactive shows

1

Click [PaperLive](#) on the top of the student's screen to view the schedule of shows for the week



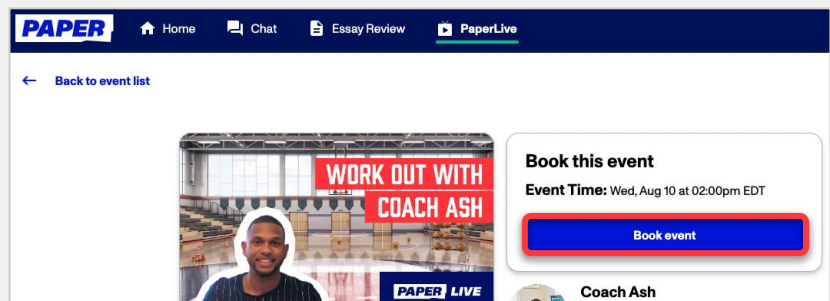
2

Select the show that you're interested in



3

Sign up to view the show by clicking [Book Event](#)



4

After signing up, your parents/guardians can add a reminder to their [calendar](#).

At the time of the event, you can select the [Join Zoom](#) button, or click the Zoom link from the calendar invite.

